

SWIFTCLEAN
environmental



keeping UK air and water systems
safe, hygienic and legal, since 1982

Five Great Reasons to trust Swiftclean

1 If you are not entirely satisfied with any aspect of our service, then simply let us know. We will continue working on the problem until you are completely delighted with our quality of work.

2 In the unlikely event that, despite our exhaustive efforts, we cannot finish your job to your complete satisfaction, we will give you a full and courteous refund. No hassle, no questions asked and no hard feelings either.

3 We guarantee that our workmen will be on site at the pre-arranged time. If they're not, you will be entitled to a credit note towards the cost of your next job.

4 We guarantee that the completion of a job will take no longer than confirmed. If it does take longer than anticipated, again, you will be entitled to a credit note.

5 If you purchase your water tank coating from us, not only will we undertake your inspections at a very advantageous rate, and discharge your legal obligations to do so, we'll also give you a lifetime guarantee, free of charge.

Complete satisfaction or your money back

Over 20 years of successful air and water treatment.

Swiftclean is the name you can trust, now and into the future.

Here's how Swiftclean differs from the competition



Swiftclean's objectives are achieved by close teamwork.

You can trust Swiftclean to carry out your job - professionally, conscientiously and courteously.

Compulsory legislation and industry guidance for the water and ventilation hygiene industry is constantly changing - Swiftclean is able to provide you with up to date technical guidance, to enable you to remain legal, safe and profitable at all times.

With all the below benefits you can be assured of the very best advice from market leader, Swiftclean.

- Swiftclean employees, from director to in the field operative, possess comprehensive knowledge of the industry, gained from hands-on experience.
- Swiftclean is an 'Investors in People' company. You, the customer, benefit from our committed, highly trained workforce.
- Swiftclean's low staff turnover provides you with invaluable continuity of personnel contact.
- Swiftclean does not sub-contract its core services - its directly employed operatives are available to you, 24/7.
- Swiftclean directors contribute to the Industry's Guidance documents; from this our services are tailored to provide you with best practice maintenance.
- Swiftclean is a registered service provider with the Legionella Control Association – your guarantee of our competence in this critical area of maintenance.
- Key employees are members of the highly respected Water Management Society – you know they are best informed to advise you.
- The director responsible for Health and Safety holds NEBOSH certification and site staff are Skill Card holders.
- Swiftclean directors are periodically called as expert witnesses in industry related cases; this expert knowledge is available to you.
- Our longevity means Swiftclean Guarantees really mean something, and, unlike others in the marketplace, will continue to do so.
- Swiftclean is highly respected within the industry and is renowned for setting hygiene standards.

Water Hygiene Services

Legionella is a highly contagious bacteria that can proliferate in stagnant or contaminated water conditions. On average there are 200-250 reported cases of Legionnaires' Disease – a potentially fatal form of pneumonia – in the UK each year, of which up to 12% can prove fatal.* Outbreaks are often associated with cooling tower systems or hot and cold water systems.

Businesses, public authorities and their managers have a legal duty, under the Health & Safety At Work etc Act 1974 and the Control of Substances Hazardous to Health Regulations, to manage and control the risk of exposure to legionella bacteria.



Legionella bacteria

Outbreaks are often associated with cooling tower systems or hot and cold water systems.

Your Legal Duties

- Identify and assess the sources of risk
- Prepare a scheme for preventing or controlling the risk
- Appoint a person to be managerially responsible
- Implement and manage precautions
- Keep records of the precautions implemented

Failure to comply can and does lead to prosecution of individuals and organisations

What Swiftclean can do for you

As a specialist in building services environmental hygiene, Swiftclean is experienced in helping building managers fulfil all of these statutory requirements.

■ Legionella Risk Assessment

A Swiftclean legionella risk assessment includes:

■ Initial Assessment

Assessment of risk from Legionellosis plus a review of the general condition of your water systems.

■ Accurate Water System Schematics

Accurate recording of your water systems provides a basis for pinpointing trouble spots, recorded as computer generated schematics, if required.

■ Remedial Works

Where the assessment identifies problem areas, these can be remedied, removed or controlled.

■ Full Treatment Programme

A tailored programme, employing special chemicals, testing and treatments, recorded on detailed log sheets in prescribed dosages as appropriate for cooling towers and water systems.

■ Comprehensive Log/Record

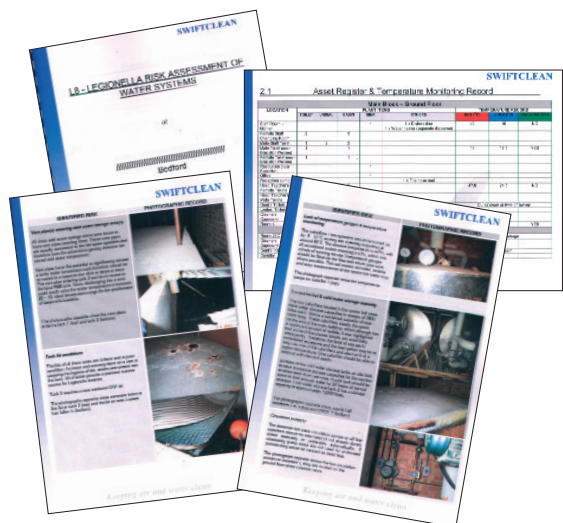
A step-by-step guide to water system management and operating procedures, plus a single safe storage facility for all documentation relating to your water management system.

■ Microbiological Reports

Levels of bacterial activity in key risk areas are regularly determined and recorded, thereby indicating whether special treatment is required.

■ Regular System Inspections

Detailed inspections as recommended in the Approved Code of Practice & Industry Guidelines.



■ Legionella Risk Assessments

A statutory requirement for buildings owners/operators. Swiftclean carries out rigorous site specific surveys and reports.

Treatment Records and Certification

All Swiftclean programmes include full records and certification of treatment and remedial works, providing evidence for inspection by the Health and Safety Executive or Environmental Health Officers.

*Source: Health & Safety Commission

If you're looking for a great service, backed up by guarantees and countless benefits, look no further than Swiftclean's exceptional service.

■ Water Tank Cleaning and Water System Disinfection

Using special chemicals, Swiftclean ensures that biofilms are effectively removed from water storage tanks and pipework, thus providing very efficient control of the Legionella bacteria.

■ Water Tank Refurbishment

Swiftclean will undertake cleaning and refurbishment of all manner of water systems and associated pipe work, from a 50 litre domestic tank to a massive man-made reservoir. Special coatings ensure that conditions for Legionella growth are not favourable.



Both commercial and domestic tanks and pipework are susceptible to Legionella growth

■ Permasolvent Physical Water Treatment

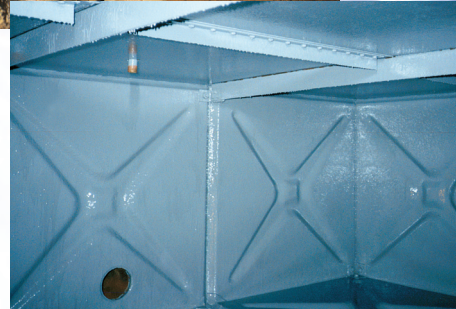
- Hard scale deposits are greatly reduced by Permasolvent.
- Existing scale deposits are progressively dissolved or at least stopped, depending upon the kind of incrustation.
- Only a very thin scale covering is formed in new water pipes, and this is useful as it helps to prevent corrosion.
- Rusty water is virtually completely eliminated, provided that the stipulated pipe rinses are strictly observed.

Treatment Records and Certification

All Swiftclean programmes include full records and certification of treatment and remedial works, providing evidence for inspection by the Health and Safety Executive or Environmental Health Officers.

Before treatment

Heavily corroded internal tank surfaces

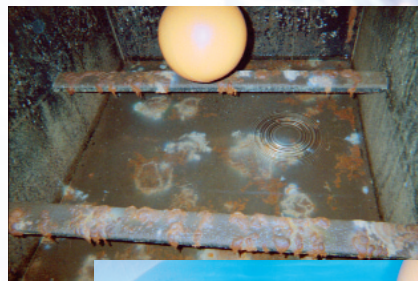


After treatment

Internal coating with specialist material

Before treatment

Bacteria, rust and scale in water storage tank



After treatment

Total refurbishment creates hygienic conditions to industry standards

Ventilation Hygiene Services

The cleanliness and efficiency of air handling equipment within a building is key to the provision of an adequate supply of clean air. Dirty or contaminated ductwork causes a deterioration in air quality and can be a health hazard. Kitchen grease extracts are also a potential fire risk if not kept within approved guidelines.

Your Legal Duties

The Workplace (Health Safety and Welfare) Regulations 1992 (Regulation 5) requires that mechanical ventilation systems used for providing general ventilation are maintained (including cleaned as appropriate). If and when these are cleaned should be defined by the risk assessment process.

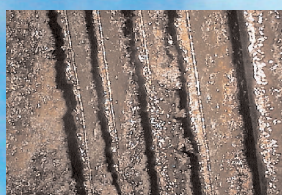
Building Managers therefore have a legal duty to ensure a clean and efficient supply of air is delivered to the workplace and that all ducts are kept clean and free from hazard.

To ensure that your legal position is covered in terms of ventilation system hygiene, you need to define:-

- A 'suitable and sufficient' assessment of risk
- When it is 'appropriate' to clean
- What 'a suitable system of maintenance' is
- What 'suitable intervals' for maintenance are
- What 'a suitable record' for the validating of the maintenance programme is

Kitchen Grease Extract Systems

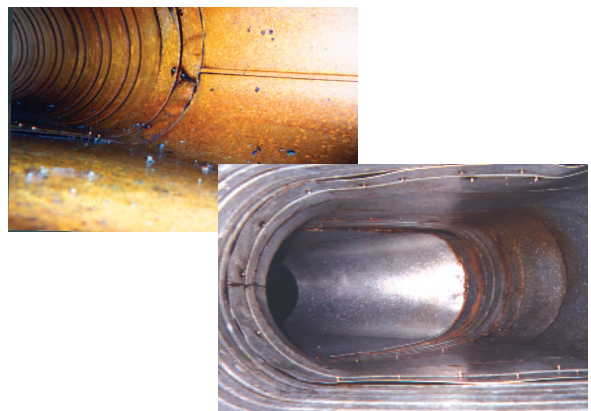
Failure to adequately clean your grease extract system could lead to the failure of your business. Insurance companies have specific stipulations relating to buildings insurance policies where kitchen extracts are present, due to the risk of fire. If the kitchen extract system is not maintained in compliance with the terms of your building insurance, then in the event of an associated fire the insurers may refuse to pay a claim.



Kitchen grease extract ducts (pre-clean)

■ Ventilation Hygiene Survey

Deposits will accumulate in ventilation systems no matter how good the filtration. It is important that this is regularly assessed to identify when it is appropriate to carry out cleaning. Various methods can be utilised to make such assessment.



■ Indoor Air Quality Survey

The quality of air in the workplace affects the productivity, state of mind and the health of employees. Guidelines and regulations governing Indoor Air Quality include standards from the Health and Safety Executive, the Health and Safety Commission, the Chartered Institution of Building Services Engineers and the British Standards Institution. Various parameters can be monitored.

■ Local Exhaust Ventilation (LEV) Testing

The Control of Substances Hazardous to Health (COSHH) Regulations require that, where certain chemicals and other substances are used in industrial and commercial processes, they should either be contained or safely dispersed normally using Local Exhaust Ventilation.

Also a requirement of these regulations is that LEV systems should be regularly tested to ensure that they are operating efficiently (ideally every 14 months). The provision of this service ensures that LEV systems are adequate and within regulations.

Treatment Records and Certification

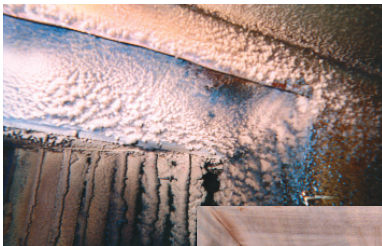
All Swiftclean programmes include full records and certification of treatment and remedial works, providing evidence for inspection by the Health and Safety Executive or Environmental Health Officers.

Formed in 1982 Swiftclean boasts many years experience in the field, carrying out an extensive range of cleaning techniques, utilising the widest range of specialist equipment available, to the recognised standards.

What Swiftclean can do for you

■ Risk Assessment

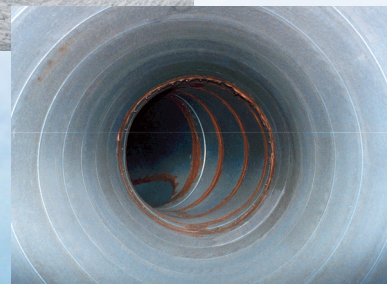
Swiftclean has a team of specialist trained surveyors who carry out comprehensive ventilation and air quality assessments, inspections and testing across the UK. Swiftclean inspections can include CCTV video, photographic records, system layout drawings and information on a number of additional system safety issues, such as; filter cleaning regimes, and component damage.



■ Remedial Works

Should the results of a Swiftclean survey recommend that remedial works are required, Swiftclean is able to offer a comprehensive range of services to ensure that these works are carried out to the highest standards.

- Ductwork cleaning
- Kitchen grease extract cleaning
- Heat transfer coil cleaning
- Air handling plant refurbishment
- Installation of access doors
- Advice on position and quantity of correct access doors to comply with industry guidelines
- Pre-commission cleaning to remove builders residues and dusts from ductwork prior to a new or refurbished building becoming operational



Treatment Records and Certification

All Swiftclean programmes include full records and certification of treatment and remedial works, providing evidence for inspection by the Health and Safety Executive or Environmental Health Officers.

Other Swiftclean Services

Swiftclean can help you in so many ways to clean your premises and to maintain high standards of safety and cleanliness. This protects the health of the occupants and the budgets of its owners.



■ Post Fire Smoke Deposit Removal

We can assist with all types of post fire clean up & decontamination operations. Minster Court was severely damaged by fire. In 1991 Swiftclean completed, on programme, a £1.8 million clean-up operation.

A video is available on how the project was undertaken at Minster Court, please contact us if you would like to see a copy.



■ Pigeon/Vermin Infestation

Colonisation of plant/tank rooms by pigeons is a regular occurrence causing health hazards. Swiftclean will clean and decontaminate such areas.

■ Kitchen Equipment Deep Cleaning

Periodic deep cleaning of floors, wall, ceilings and commercial catering equipment is undertaken by our trained staff.

■ Urinal Odour and Blockage Solutions

Odour and blockage problems are typical within mens' public washrooms. Swiftclean offers solutions to eliminate these problems.

■ Clinical Area Cleansing

Specialist hygienic cleans of hospital clinical areas to suit specific requirements.

Treatment Records and Certification

All Swiftclean programmes include full records and certification of treatment and remedial works, providing evidence for inspection by the Health and Safety Executive or Environmental Health Officers.

■ **National Service Delivery**

You can be assured of efficient contract management that will pre-plan your works, provide site specific risk assessments and method statements as required, in full compliance with Health and Safety requirements.

Works are carried out using regionally based, Skill carded staff who are all confident and competent in the services they provide.



■ **Service Centre Locations**

Swiftclean provides you with a truly national service - minimising costs, whatever the distances involved.



INVESTOR IN PEOPLE

More reasons to trust in Swiftclean

Service Reminders

You will always be reminded of when your periodic maintenance service is due. This saves you time and trouble, by not having to remember to contact us each time.

Continuity Of Personnel

When we first undertake work on your behalf, you will be introduced to a member of our team, who is your designated contact. To make life easy and provide continuity that same person will be your main contact on site every time we work for you. On the rare occasion this is not possible, we'll induct another member of our team on your behalf - saving you valuable time.

Daily Progress Reports

You can choose how often you would like to be updated on the progress of your job. This might be daily, weekly, monthly or somewhere in between. This is so we can have regular contact with you, and any queries or problems can be raised and dealt with immediately.

Job Completion

Our customers will be advised of the expected completion date and time. You are given the opportunity to inspect our completed work if you wish. This is to ensure that you are completely satisfied with every aspect of the job, every time

Programme Completion Certificate

Our Programme Completion Certificate will advise you when your job has been completed. It will also confirm when your final report is due for completion. This means that you won't be kept in the dark.

Reports

Our aim is to have final technical reports completed within two weeks from the finish date of the job. This is so you don't have to wait for long periods of time for essential management documentation.

Re-Packaging Services

Swiftclean can package services together, in order to minimise disturbance and inconvenience, and to make your job as cost effective as possible.

One example is the cleaning of ventilation ductwork at the same time as water tank cleaning and disinfection. The normal non-productive times of draining and filling tanks can be utilised to give you better value for money when services are packaged together.

Dedicated Care Line

If you have any queries or concerns on any aspect of Swiftclean's products or services, before, during or after your project, we would like to hear from you.

Call us free on

0800 243471

Don't just take our word for it.

Extracts taken from Swiftclean's Service Performance Review questionnaires on why our customers use Swiftclean.

'good attitude and reliability'

'worked with them before and was very happy with service'

'very good, professional, competent'

'an excellent company to deal with'

'Swiftclean was highly recommended to our company – we would definitely recommend them to others'

'clean, tidy and understanding'

SWIFTCLEAN
environmental 

Keeping
the nation's
air and water
clean.



SWIFTCLEAN environmental

24 hours a day 7 days a week 365 days a year

www.swiftclean.co.uk

Head Office:

**Swiftclean (UK) Limited
Aviation Way, Southend-on-Sea
Essex SS2 6UN**

**Telephone 01702 531221
Fax 01702 531220
email info@swiftclean.co.uk
www.swiftclean.co.uk**

Midlands Office:

**Swiftclean (Midlands) Limited
Linford House, The Square, Glenfield
Leicester LE3 8DQ**

**Telephone 0116 232 7939
Fax 0116 232 7938
email midlands@swiftclean.co.uk
www.swiftclean.co.uk**