

Water Services to ACoP L8

Legionnaires' disease; the control of Legionella bacteria in water systems

For over 20 years, Swiftclean has been a well-respected member of the Legionella Control Association (known as the LCA), from whom we are subject to an in-depth annual audit to ensure industry standards are met.

Legionella bacteria is known to colonise man-made water systems and to be found in cooling towers, hot and cold water systems and other plant which use or store water.

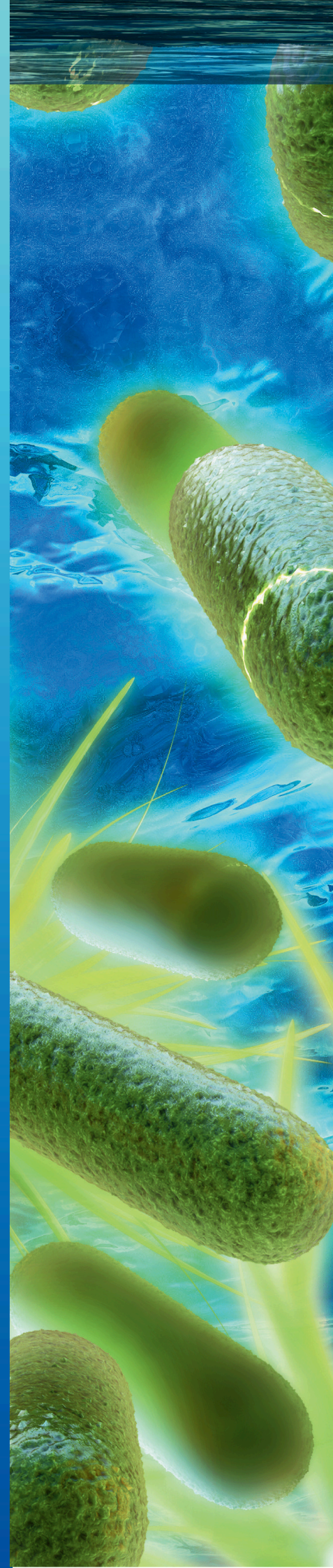
There are many documented cases of individuals contracting Legionnaires' Disease. This can be fatal in approximately 12% of cases.

The Control of Substances Hazardous to Health Regulations 2002 require employers to control the risk of micro-organisms that may cause infection or otherwise create a hazard to human health.

The Health & Safety Commission publishes an Approved Code of Practice & Guidance document, known as "L8 Legionnaires' Disease; the control of Legionella bacteria in water systems". This gives practical advice on controlling this risk and states that to comply with their legal duties, duty holders should:

1. Identify and assess sources of risk
2. Prepare a scheme for preventing or controlling the risk
3. Implement, manage and monitor precautions
4. Keep records of the precautions
5. Appoint a person to be managerially responsible

We can help you with this – please see overleaf for our services and commitments relating to water works – or simply call us on 0800 243 471 or email us info@swiftclean.co.uk



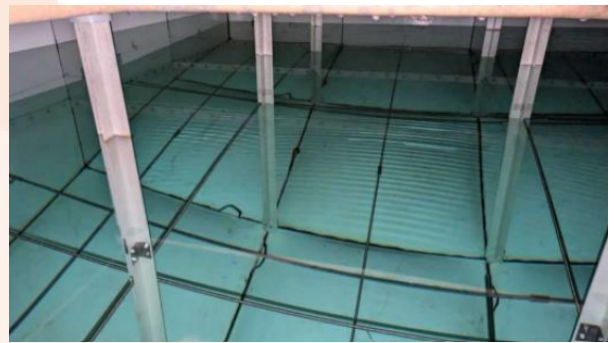
We offer:

L8 Legionella control

- Legionella risk assessments
- Water sampling
- Water system monitoring
- Water tank cleaning
- Water system cleaning and disinfection
- Legionella control training seminars
- Legionella management and control consultancy



Pre clean of a cold water storage tank



Post clean of a cold water storage tank

Closed water system testing and treatment

- Water chemistry analysis
- Dosing

Ad hoc water works

- Tank lining
- Provision of specific equipment, tanks, etc.

Swiftclean's commitment to water works

All work is carried out following the Legionella Control Association code of conduct (L8)

- Risk assessments and control schemes carried out to L8, BSRIA and CIBSE guidelines
- All works fully certified and Legionella control logbooks provided via customer portal
- Fully trained and directly employed staff
- Site specific RAMS can be provided on request
- Training for your own staff following risk assessment